

# SPECIAL OFFER



## TM Palletizing Operator

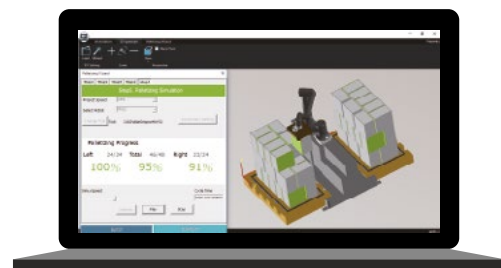
Click & Run, Cheer & Apply



SPECIFICATION	TM PALLETIZING OPERATOR-TM12	TM PALLETIZING OPERATOR-TM20
Maximum Payload <sup>1)</sup>	10 kg	18 kg
Maximum Pallet Speed	Up to 7 boxes/object per minute <sup>2)</sup>	Up to 5 boxes/object per minute <sup>2)</sup>
PRICE <sup>3)</sup>	47,000 Euro	51,000 Euro
<p><sup>1)</sup>The payload at robot flange is 12Kg for TM12 or 20kg for TM20. <sup>2)</sup>The pallet speed varies depending on a number of factors, e.g. vision recognition, box arrangement, actual pneumatic suction gripper, pillar, or I/O reaction time. <sup>3)</sup>The promotional price is valid until 31.12.2024 and applies to a complete set with a safety gripper.</p>		

# WHAT IS TM OPERATOR?

- **17** Certified PL=d Cell Level Safety Functions
- TMstudio Palletizing Wizard: **World NO.1**, palletizing wizard and collision detection
- A ready to use, all-in-one application based robot cell
- With application based software
- Reduce programming effort



## FEATURES

- ① Built-in Vision System
- ② Adjustable Flexible Gripper  
Maximum Payload 18kg
- ③ Speed: Up to 7 boxes/min
- ④ Lifting Pillar:  
Reach: 500, 800, 1200 mm  
Max. stack height 2325 mm  
(Max. stack height varies with different pillar stroke, please see specification table for more information)
- ⑤ Teach Pendant Included
- ⑥ Built-in Safety Controller
- ⑦ Sensor and Indication for Pallet Detection

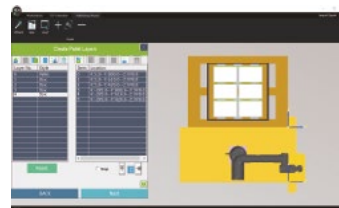


# APPLICATION BASED SOFTWARE

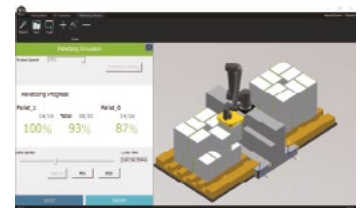
## TMSTUDIO PALLETIZING WIZARD

Provide the optimization solution for palletizing

- Customize box, pallet size
  - Regular Palletizing for same boxes
  - Palletizing for different pallets of boxes
  - Regular De-Palletizing for same boxes
  - De-Palletizing for different pallets of boxes
  - Change Pallet
- Generate point file offline.
- Custom box arrangement and sequence.
- Palletizing simulation and collision detection.



■ Setting of the Pallet



■ Simulation

## SOFTWARE PACKAGES FOR TMFLOW™

### Main Function

- Calibration of pillar.
- Main function based on file generated from TMstudio Palletizing Wizard, and settings for the cell.
- Provide script node for more programming flexibility with TMflow™ 2 series.

### Flexibility for functional expansion by user

- Using customized gripper.
- Adding more vision functions like barcode reading.
- Adding downward sensor detection before releasing the box.
- Slip sheet application programming.



■ Pillar height 500 mm



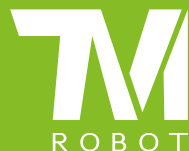
■ Pillar height 800 mm



■ Pillar height 1200 mm

# SPECIFICATION

SPECIFICATION		
SPECIFICATION	TM PALLETIZING OPERATOR-TM12	TM PALLETIZING OPERATOR-TM20
Stack Height*	Pillar Stroke 500mm: 1345mm; Pillar Stroke 800mm: 1725mm ; Pillar Stroke 1200mm: 2325mm	
Maximum Payload**	10 kg	18 kg
Maximum Pallet Speed	Up to 7 boxes/object per minute***	Up to 5 boxes/object per minute***
Certification	CE, Machine Directive 2006/42/EC, ISO 12100, EN 60204-1, ISO 10218-2 (partly completed machinery), ISO 13849-1, ISO/TS 15066	
Safety Functions	17 cell level safety functions with 3rd Party certification PL=d according to ISO13849-1	
Teach Pendant	10.1" capacitive touch screen, with ESTOP and Enabling Switch, Cable length: 3m, 2 USB ports provided	
IP Rating	IP54 for Robot Arm, IP65 for Teach Pendant, IP32 for Gripper and the rest of parts	
Interface	Support multiple safety inputs and safety outputs: Emergency stop, Safeguard Pause, Safeguard Human-Machine Safety Setting	
Software	Offline programming & Simulation: TMstudio Palletizing Wizard Editing and Running: TM Palletizing Operator Software Packages	
Eye in Hand(Built in)	1.2M/5M pixels, color camera	
Eye to Hand(Optional)	Support Maximum 2 GigE cameras	
* Stack height is the height of the center of the robot's Joint 2 above the ground, with the pillar stroke at its maximum. Differences in box size, box layout and gripper might affect actual stack height		
** The payload at robot flange is 12Kg for TM12 or 20kg for TM20		
*** The pallet speed varies depending on a number of factors, e.g. vision recognition, box arrangement, actual pneumatic suction gripper, pillar, or I/O reaction time		
PRODUCT CONTENT		
Robot Arm & control box		
Teach Pendant and cable		
TM Palletizing Operator Base, including: Indication light for Pallet detection ; Lifting Pillar module & Drag Chain		
Pneumatic Suction Gripper Set, including: Pneumatic Suction Gripper ; Cable Conduit ; Pneumatic Set: Air preparation unit, Solenoid valve, Air tube to the tool end		
Software License Dongles		



# TM PALLETIZING OPERATOR

Do you want to maximize the efficiency  
of your production line? Contact us!

## ROMANIA

### BRANCH HQ

Municipiul Timișoara, Strada  
Gheorghe Lazăr, Nr. 24A, parter,  
spațiu NR.6, Județ Timiș

T: +40 733 249 464

### A BRANCH OFFICE

Strada Văliug, nr. 32, Sector 1  
13986 București

T: +40 799 774 330

E: [office@renex.ro](mailto:office@renex.ro)

## HEADQUARTERS - POLAND

Al. Kazimierza Wielkiego 6E  
87-800 Włocławek, Poland

T: +48 54 427 04 00

E: [office@renex.pl](mailto:office@renex.pl)

## CROATIA | SLOVENIA

Slavonska avenija 22d  
10000 Zagreb, CROATIA

T: +385 99 44 89 666

E: [office@selen.hr](mailto:office@selen.hr)

## BULGARIA

Botevgradsko Logistics Park blvd.  
Botevgradsko Shose 228 1839 Sofia

T: +359 877 066 363

E: [office@renex.bg](mailto:office@renex.bg)

## INTEGRATOR SUPPORT

T: +48 885 592 555

E: [office@renexrobotics.pl](mailto:office@renexrobotics.pl)

[www.renexrobotics.pl](http://www.renexrobotics.pl)

## SERBIA

Institute Mihajlo Pupin  
Volgina 15, 11060 Belgrade

T: +381 66 03 01 03

E: [office@renex.rs](mailto:office@renex.rs)

## NORTH MACEDONIA

Stojka Cekova 58 Skopje

T: + 389 22 550 519

T: + 389 70 261 741

E: [office@renex.mk](mailto:office@renex.mk)

